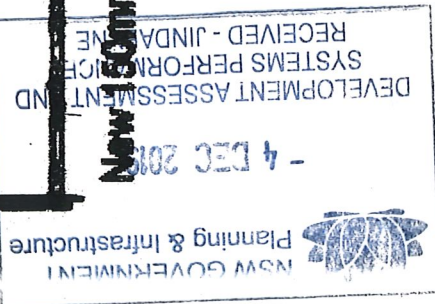


Existing Plans

Proposed New Plans



- 4 DEC 2018

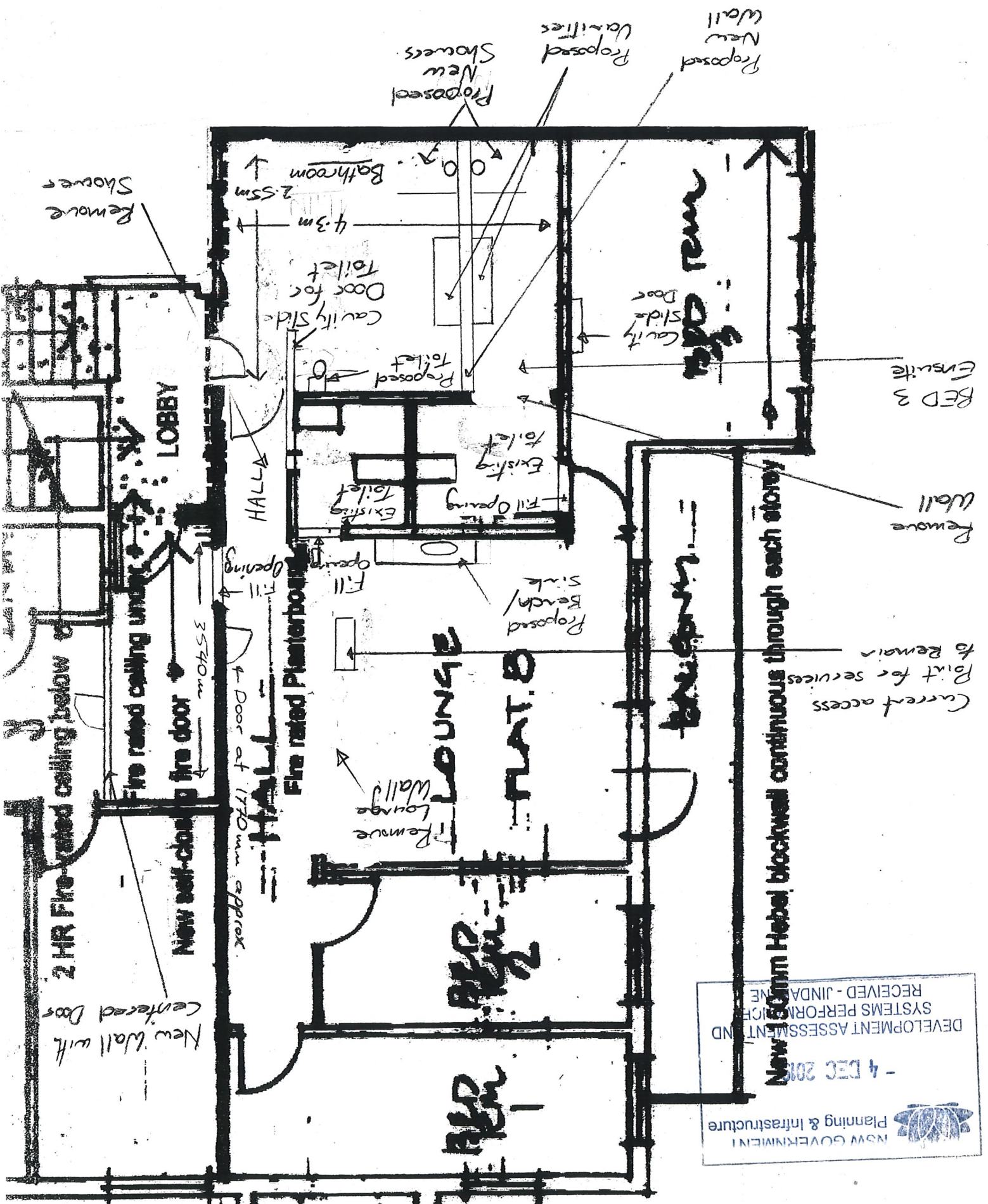
DEVELOPMENT ASSESSMENT AND
SYSTEMS PERFORMANCE
RECEIVED - JINDAMARRA

New 60mm Hebel blockwall continuous through each storey

Current access
Point for services

Remove
Wall

BED 3
Ensuite





NSW GOVERNMENT
Planning & Infrastructure

- 4 DEC 2019

DEVELOPMENT ASSESSMENT AND
SYSTEMS PERFORMANCE
RECEIVED - JINDABYNE



1:1,128
0 10 20m





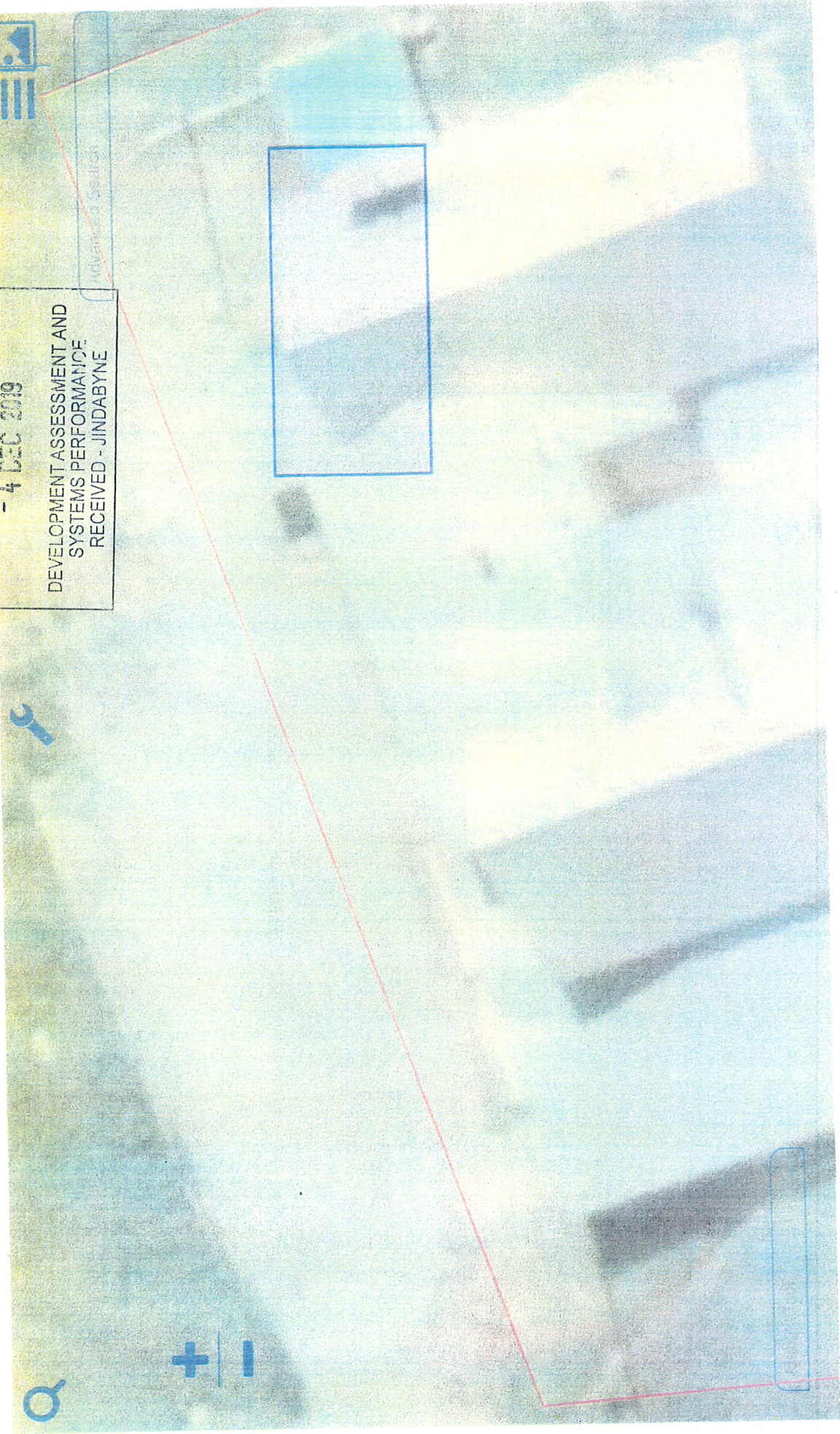
NSW GOVERNMENT |
Planning & Infrastructure

4 DEC 2019

DEVELOPMENT ASSESSMENT AND
SYSTEMS PERFORMANCE
RECEIVED - JINDABYNE



Advanced Search



1:282

